


# Ball Transfer Unit A7174-16

Ball Units Series A7 - Wheel S/3

 -30 °C - +100 °C

 swivels easily

 wear resistant

 shock proof

 floor protective

 weather proof

## Wheel

Ball: carbon steel or stainless steel

Units are machined using CNC machines  
from one piece of steelHevi-Load units run on the re-circulating ball principle  
The load ball rotates on a hardened bed of small balls

## Ball Transfer Unit

Series: 3

Ball-Ø mm: 50,8

Finish housing: steel

Finish Balls: stainless steel

Load Capacity kg: 1330

Load capacity tested according to EN 12530 and EN 12527

A mm: 101,6

B mm: 98,3

C mm: 14,3

F mm: 9,6

G mm: 101,6

H mm: 11

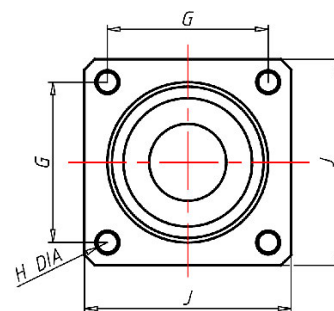
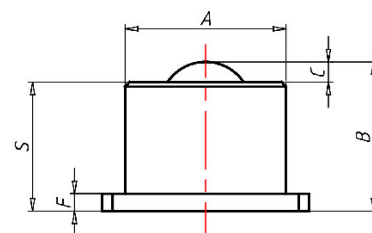
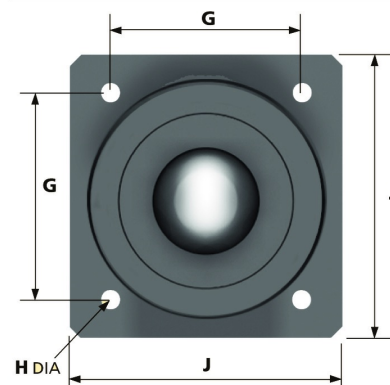
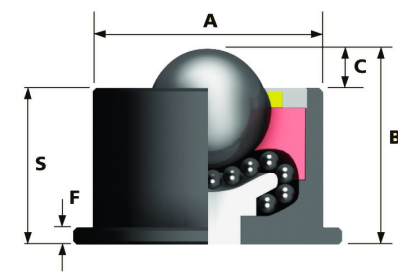
J mm: 127

S mm: 84

## Advantages

- ✓ Casing made of solid steel on the lathe
- ✓ units run on the re-circulating ball principle
- ✓ The load ball rotates on a hardened bed of small balls
- ✓ plate with four fixing holes

©Copyright 2024 Rollenbau GmbH, www.rollenbau.at 08.05.2024

 ROLLENBAU


## Applications

- Haulage way
- Assembly lines